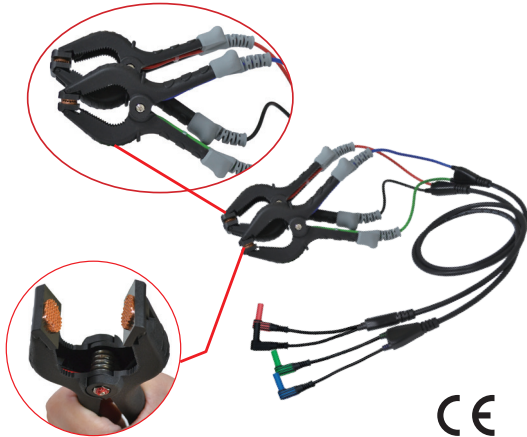
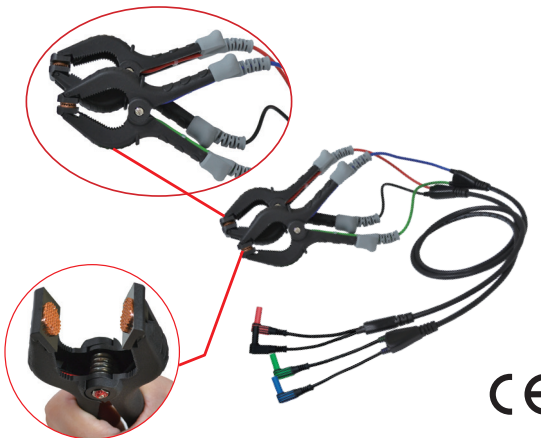


## Test Leads

**AL-34WB CE**

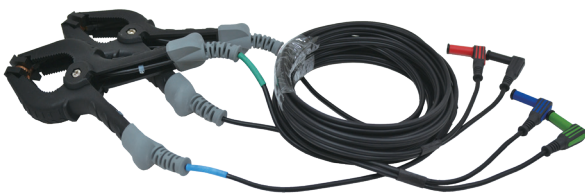
Model name: Kelvin clip test leads

- Wire length: 1.2m approx.  
Silicone insulated wire (1000mm) with wire connected to straight input plugs (130mm PVC wire), and wire for clamp (100mm PVC wire).
- Outside diameter of silicone insulated wire: 5mm  
Outside diameter of PVC wire: 3.5mm
- Input plug color: Red•Green•Black•Blue
- Current rating: 10A
- Voltage rating: 300V
- Designed for Milliohm meter, Micro-ohm meter,  
Low resistance measurement with high current injection.
- Conductor size: 40mm maximum
- Safety standard: EN IEC 61010-031 CAT IV 300V / 10A

**AL-34WB 10A**

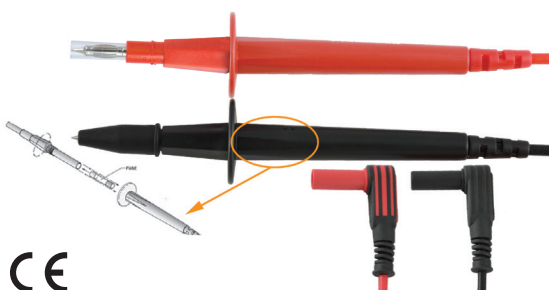
Model name: Kelvin clip test leads

- Wire length: 1.2m approx.  
Silicone insulated wire (700mm) with wire connected to straight input plugs (150mm PVC wire), and wire for clamp (150mm PVC wire).
- Outside diameter of silicone insulated wire: 6.4mm  
Outside diameter of PVC wire: 4mm
- Input plug color: Red•Green•Black•Blue
- Current rating: 10A
- Voltage rating: 300V
- Designed for Milliohm meter, Micro-ohm meter,  
Low resistance measurement with high current injection.
- Conductor size: 40mm maximum
- Safety standard: EN IEC 61010-031 CAT IV 300V 10A

**AL-34WB 10A 3M**

Model name: Kelvin clip test leads

- Wire length: 3000±30mm  
PVC insulated wire (3000mm) with connected  
Outside diameter: 4.0mm
- Input plug color: Red•Green•Black•Blue
- Current rating: 10A
- Voltage rating: 300V
- Designed for Milliohm meter, Micro-ohm meter,  
Low resistance measurement with high current injection
- Safety standard: EN IEC 61010-031 CAT IV 300V 10A

**AL-35,AL-35F**

- Spring-shrouded 4mm brass caged banana probe tip
- Double insulated silicone wire, 1m
- Shrouded right-angle connectors
- Rating: EN 61010-031:2015 CAT III 1000V 10A  
**AL-35R Red, AL-35B Black**
- **AL-35F**: fused version of **AL-35**  
Fuse size: 6×32mm  
Rating: EN 61010-031  
CAT III 250V 10A / 500V 10A / 690V 2A  
**AL-35FR Red, AL-35FB Black**
- Test tip 4 mm: CAT III 1000V  
Test tip 17 mm: CAT II 1000V