

DMM FOR SOLAR POWER SYSTEM AND POWER EQUIPMENT

SEW

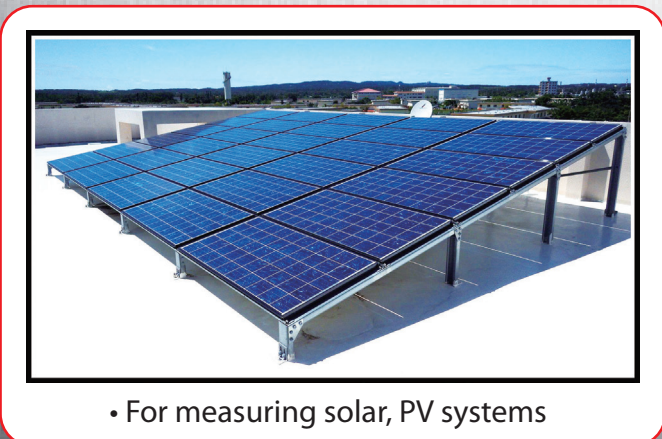
(DC 1500V/AC 750V) WITH AC/DC AUTO SCANNING



IP65

CE

- Protection class: IP65
- 6000-count LCD
- DC 1500V / AC 750V for solar power system and power equipment management
- With magnets for attachment (8002A DM)
- AC/DC auto scanning
- AC/DC μA : 600.0 μA ~ 6000 μA
- AC/DC mA : 60.00 mA ~ 600.0 mA
- Resistance : 600.0 Ω ~ 60.00 M Ω
- Capacitance : 6.000 nF ~ 60.00 mF
- Frequency : 6.000 kHz ~ 100.0 kHz
- Diode, Continuity function
- VAHz function for voltage and current
- Range change function
- Data hold
- Auto power off
- Low battery indication
- Comply with EN IEC 61010-1, CAT III 1000V, CAT IV 600V EN IEC 61326-1
- Operating temperature : 0 ~ 40°C
- Relative humidity : 80% max.
- Dimension : 221 x 110 x 57mm



• For measuring solar, PV systems



with magnets
8002A DM



Hand strap

STANDARD ELECTRIC WORKS CO., LTD.
www.sew.com.tw

5F., NO.105, JHONGCHENG RD., TUCHENG DIST.,
NEW TAIPEI CITY 23674, TAIWAN (R.O.C.)
TEL: 886-2-22681528
FAX: 886-2-22681529
e-mail: sales@sew.com.tw

Model

8002 DM
8002A DM

SPECIFICATIONS

DC Voltage

Ranges	Resolution	Accuracy
600mV	0.1mV	±(0.5%rdg+5dgt)
6V	1mV	
60V	10mV	
600V	100mV	
1000V for CE	1V	
1500V for general	1V	

- Input impedance : 10MΩ

AC Voltage

Ranges	Resolution	Accuracy
600mV	0.1mV	±(1.0%rdg+5dgt)
6V	1mV	
60V	10mV	
600V	100mV	
750V	1V	

- Input impedance : 10MΩ

DC mA / μA

Ranges	Resolution	Accuracy
600μA	0.1μA	±(1.2%rdg+5dgt)
6000μA	1μA	
60mA	0.01mA	
600mA	0.1mA	

- Overload protection 0.6A/1000V fast blow fuse for 600mA.

AC mA / μA

Ranges	Resolution	Accuracy
600μA	0.1μA	±(1.5%rdg+3dgt)
6000μA	1μA	
60mA	0.01mA	
600mA	0.1mA	

- Overload protection 0.6A/1000V fast blow fuse for 600mA.

General

Dimensions	221(L) × 110(W) × 57(D)mm
Weight (battery included)	Approx. 513g
Power source	1.5V (AA) × 2 (Alkaline batteries)
Safety standard	IEC / EN 61010-1 CAT III 1000V IEC / EN 61010-1 CAT IV 600V EN 61326-1
Accessories	Instruction manual Test leads Hand strap Alkaline batteries

Resistance

Ranges	Resolution	Accuracy
600Ω	0.1Ω	±(1.2%rdg+3dgt)
6kΩ	1Ω	
60kΩ	10Ω	
600kΩ	100Ω	
6MΩ	1kΩ	
60MΩ	10kΩ	±(2.3%rdg+4dgt)

Capacitance

Ranges	Resolution	Accuracy
6nF	1pF	±(3%rdg+10dgt)
60nF	10pF	
600nF	100pF	
6μF	1nF	
60μF	10nF	
600μF	100nF	
6mF	1μF	
60mF	10μF	

Frequency

Ranges	Resolution	Accuracy
6kHz	1Hz	±(0.5%rdg+2dgt)
60kHz	10Hz	
100kHz	100Hz	

Continuity

Range	Audible threshold
600Ω	Less than 30 Ω

Diode

Range	Accuracy
2V	±(1.5%rdg+3dgt)

